

**Chilenut A.G.**

Cruz del sur 133, of. 701 Las Condes, Santiago, Chile

[chilenut@chilenut.cl](mailto:chilenut@chilenut.cl)

[www.chilenut.cl](http://www.chilenut.cl)

**MONTHLY SHIPMENT REPORT**

**FEBRUARY 08, 2019**

**JANUARY SHIPMENTS**

**(01/MAR/2018 – 31/JAN/2019)**

<b>Inshell (Metric tons)</b>						
	<b>January</b>		<b>% change</b>	<b>Export 01/mar to 31/jan</b>		<b>% change</b>
	<b>2018</b>	<b>2019</b>	<b>2019 vs 2018</b>	<b>2018</b>	<b>2019</b>	<b>2019 vs 2018</b>
	<b>Export</b>	31	350	1020%	56.194	65.556

<b>Shelled (Metric tons)</b>						
	<b>January</b>		<b>% change</b>	<b>Export 01/mar to 31/jan</b>		<b>% change</b>
	<b>2018</b>	<b>2019</b>	<b>2019 vs 2018</b>	<b>2018</b>	<b>2019</b>	<b>2019 vs 2018</b>
	<b>Export</b>	531	1.271	139%	25.071	26.100

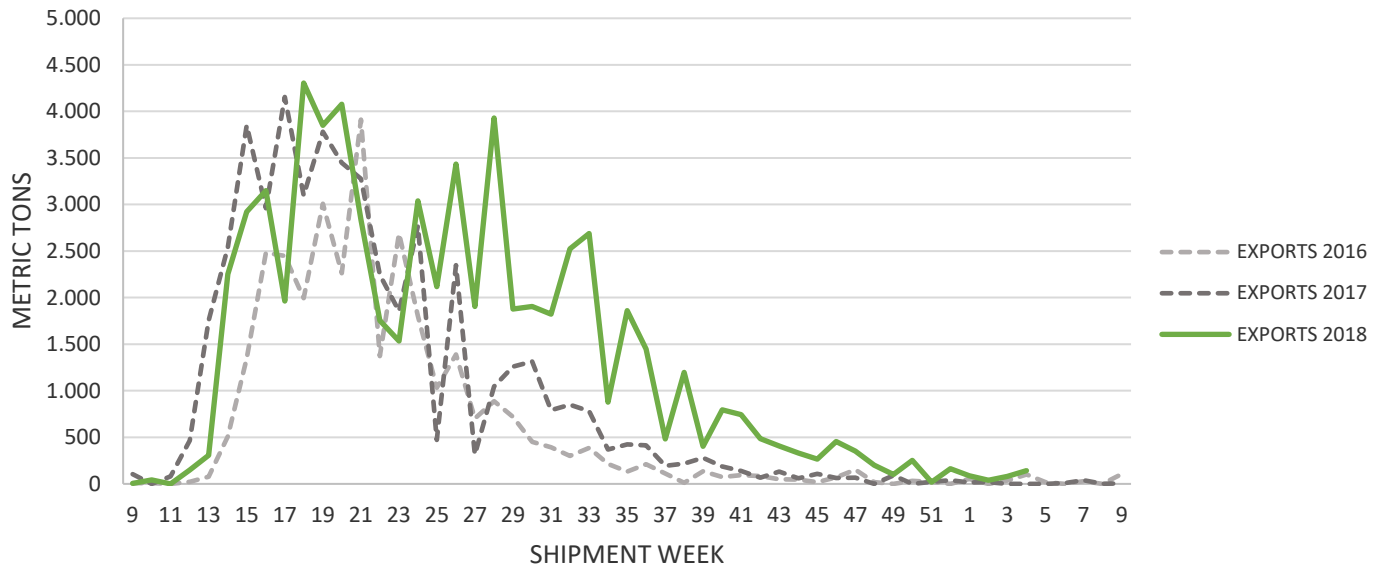
<b>Inshell equivalent (Metric tons)</b>						
	<b>January</b>		<b>% change</b>	<b>Export 01/mar to 31/jan</b>		<b>% change</b>
	<b>2018</b>	<b>2019</b>	<b>2019 vs 2018</b>	<b>2018</b>	<b>2019</b>	<b>2019 vs 2018</b>
	<b>Export</b>	1.094	2.891	164%	106.337	117.755

**Disclosure:**

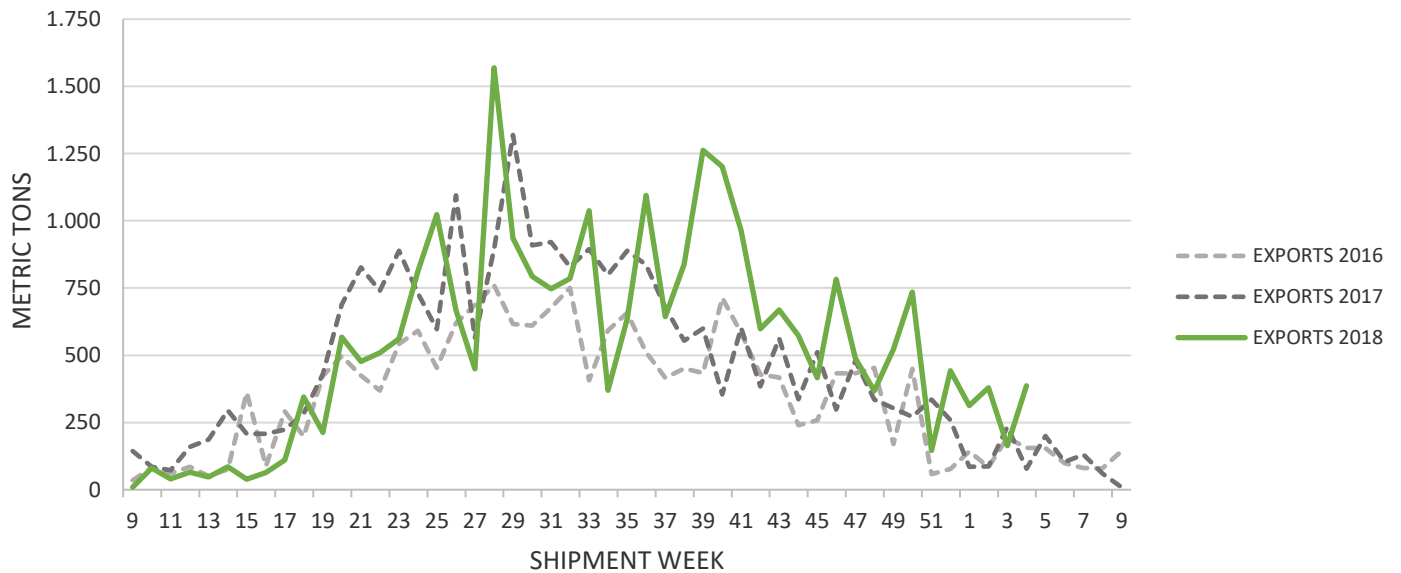
**I/ Information source:** Official records of Agriculture and Livestock Service of Chile (SAG), gathered by ASOEX (The Chilean Fruit Exporters Association).

**II/ Shellout rate 2018:** Chandler 50,7% - Serr 57,2%. Information provided by associated to Chilenut.

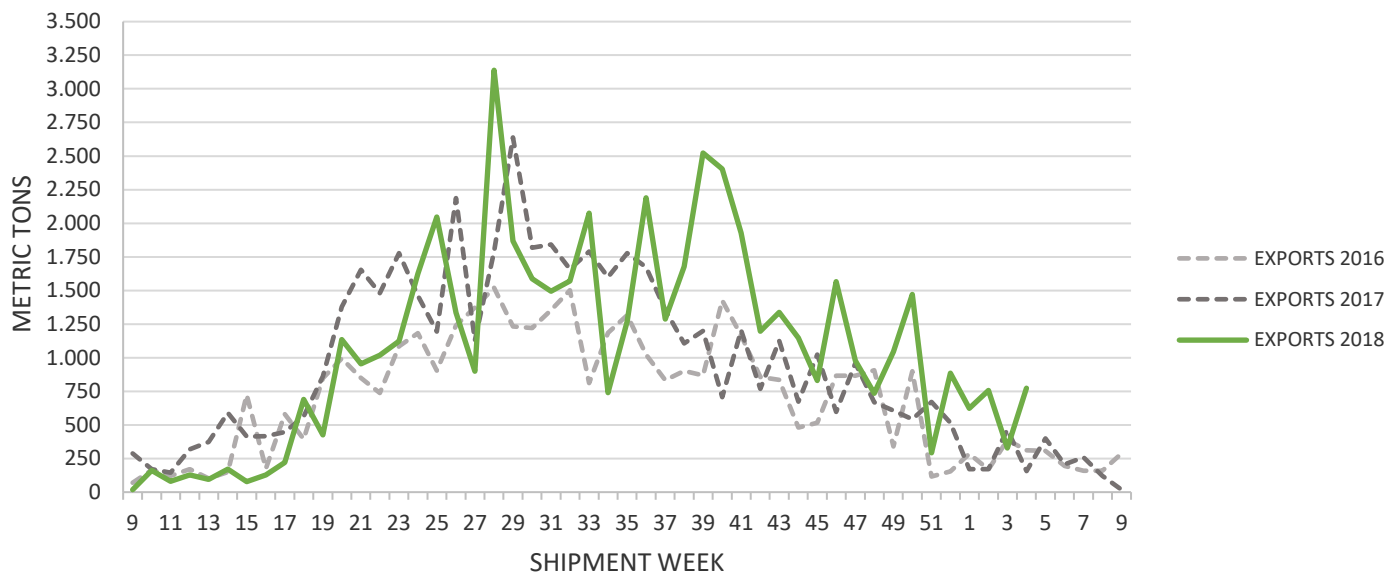
## WALNUTS SHIPMENTS INSHELL (METRIC TONS)



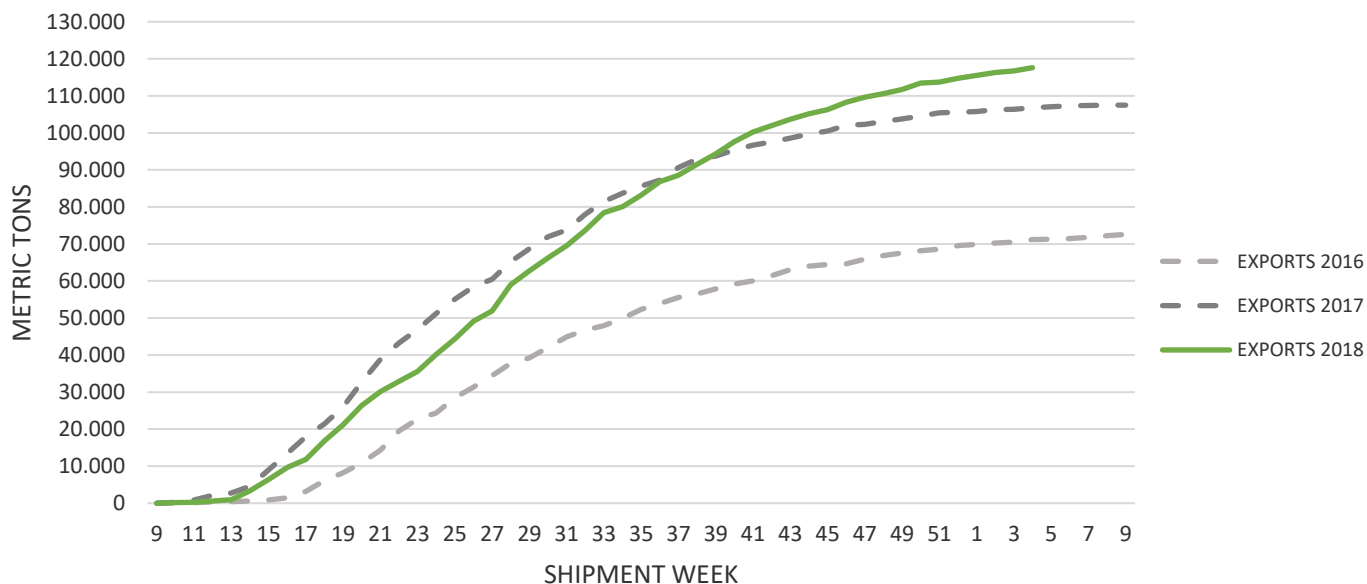
## WALNUT SHIPMENTS SHELLED (METRIC TONS)



## WALNUT SHIPMENTS INSHELL EQUIVALENT (METRIC TONS)



## WALNUT SHIPMENTS ACCUMULATED INSHELL EQUIVALENT (METRIC TONS)



# CHILENUT

## WALNUT SHIPMENTS BY COUNTRY OF DESTINATION (KILOGRAMS)

2017 (01/mar/2017 to 31/jan/2018) – 2018 (01/mar/2018 to 31/jan/2019)

	INSHELL			SHELLED		
	2017	2018	% VAR	2017	2018	% VAR
<b>MIDDLE EAST/AFRICA</b>						
Israel	0	0	-	179.242	564.570	215%
Morocco	2.518.850	4.187.355	66%	48.000	0	-100%
Turkey	26.875.703	23.761.414	-12%	666.406	215.470	-68%
U.A.E	6.398.275	7.672.640	20%	881.600	56.000	-94%
<b>SUBTOTAL MIDDLE EAST/AFRICA</b>	<b>35.792.828</b>	<b>35.621.409</b>	<b>-0,5%</b>	<b>1.775.248</b>	<b>836.040</b>	<b>-52,9%</b>
<b>EUROPE</b>						
Austria	0	0	-	533.993	902.108	69%
Belgium	635.105	157.310	-75%	262.950	140.730	-46%
France	390.700	42.500	-89%	1.426.137	1.244.482	-13%
Germany	1.108.967	3.004.515	171%	6.932.867	6.657.532	-4%
Holland	120.510	68.900	-43%	1.551.332	1.717.612	11%
Italy	7.260.814	5.118.989	-29%	2.089.456	2.315.545	11%
Lithuania	10.000	434.770	4248%	124.460	183.915	48%
Poland	54.000	0	-100%	238.400	309.750	30%
Portugal	97.650	153.542	57%	531.905	803.016	51%
Romania	429.178	1.312.875	206%	0	0	-
Russia	250.145	1.120.500	348%	805.414	700.898	-13%
Spain	1.814.184	2.463.317	36%	1.632.775	1.712.886	5%
Sweden	0	0	-	89.382	112.924	26%
Switzerland	0	0	-	617.300	861.440	40%
U.K.	30.000	61.500	105%	330.428	816.712	147%
<b>SUBTOTAL EUROPE</b>	<b>12.201.252</b>	<b>13.938.718</b>	<b>14,2%</b>	<b>17.166.799</b>	<b>18.479.550</b>	<b>7,6%</b>
<b>CENTRAL &amp; SOUTH AMERICA</b>						
Brazil	675.090	827.489	23%	3.080.943	3.165.835	3%
Ecuador	84.685	90.990	7%	656.031	911.813	39%
Peru	449.450	539.400	20%	93.243	53.910	-42%
Uruguay	10.000	50.980	410%	246.010	302.278	23%
<b>SUBTOTAL CENTRAL &amp; SOUTH AMERICA</b>	<b>1.219.225</b>	<b>1.508.859</b>	<b>23,8%</b>	<b>4.076.226</b>	<b>4.433.836</b>	<b>8,8%</b>
<b>ASIA / PACIFIC RIM</b>						
China	595.100	2.066.950	247%	0	139.492	-
India	4.805.260	6.986.599	45%	105.045	93.035	-11%
Japan	0	0	-	352.418	371.294	5%
South Korea	0	0	-	445.304	256.344	-42%
Vietnam	344.805	1.664.350	383%	0	0	-
<b>SUBTOTAL ASIA / PACIFIC RIM</b>	<b>5.745.165</b>	<b>10.717.899</b>	<b>86,6%</b>	<b>902.767</b>	<b>860.165</b>	<b>-4,7%</b>
<b>OTHER</b>	<b>1.235.890</b>	<b>3.768.684</b>	<b>204,9%</b>	<b>1.150.397</b>	<b>1.490.133</b>	<b>29,5%</b>
<b>TOTAL</b>	<b>56.194.360</b>	<b>65.555.569</b>	<b>16,7%</b>	<b>25.071.437</b>	<b>26.099.724</b>	<b>4,1%</b>

# CHILE<sup>N</sup>UT

## WALNUT SHIPMENTS BY COUNTRY OF DESTINATION (KILOGRAMS)

January 2018 / January 2019

	INSHELL			SHELLED		
	2017	2018	% VAR	2017	2018	% VAR
<b>MIDDLE EAST/AFRICA</b>						
Israel	0	0	-	0	99.766	-
Morocco	0	0	-	0	0	-
Turkey	31.225	64.275	106%	0	92.340	-
U.A.E	0	112.900	-	0	0	-
<b>SUBTOTAL MIDDLE EAST/AFRICA</b>	<b>31.225</b>	<b>177.175</b>	<b>467%</b>	<b>0</b>	<b>192.106</b>	<b>-</b>
<b>EUROPE</b>						
Austria	0	0	-	31.496	67.905	116%
Belgium	0	0	-	0	0	-
France	0	0	-	20.000	107.636	438%
Germany	0	0	-	59.506	101.980	71%
Holland	0	0	-	58.040	77.616	34%
Italy	0	0	-	41.476	41.496	0%
Lithuania	0	47.850	-	19.820	10.000	-50%
Poland	0	0	-	18.700	10.000	-47%
Portugal	0	0	-	0	20.000	-
Romania	0	0	-	0	0	-
Russia	0	58.080	-	13.846	70.000	406%
Spain	0	48.075	-	8.950	23.130	158%
Sweden	0	0	-	0	0	-
Switzerland	0	0	-	19.420	55.660	187%
U.K.	0	0	-	20.000	83.100	316%
<b>SUBTOTAL EUROPE</b>	<b>0</b>	<b>154.005</b>	<b>-</b>	<b>311.254</b>	<b>668.523</b>	<b>114,8%</b>
<b>CENTRAL &amp; SOUTH AMERICA</b>						
Brazil	0	0	-	138.888	189.872	37%
Ecuador	0	0	-	16.370	73.900	351%
Peru	0	0	-	0	7.000	-
Uruguay	0	0	-	11.020	16.004	45%
<b>SUBTOTAL CENTRAL &amp; SOUTH AMERICA</b>	<b>0</b>	<b>0</b>	<b>-</b>	<b>166.278</b>	<b>286.776</b>	<b>72,5%</b>
<b>ASIA / PACIFIC RIM</b>						
China	0	0	-	0	19.732	-
India	0	18.500	-	0	0	-
Japan	0	0	-	0	0	-
South Korea	0	0	-	0	0	-
Vietnam	0	0	-	0	0	-
<b>SUBTOTAL ASIA / PACIFIC RIM</b>	<b>0</b>	<b>18.500</b>	<b>-</b>	<b>0</b>	<b>19.732</b>	<b>-</b>
<b>OTHER</b>	<b>0</b>	<b>0</b>	<b>-</b>	<b>53.615</b>	<b>103.504</b>	<b>93,1%</b>
<b>TOTAL</b>	<b>31.225</b>	<b>349.680</b>	<b>1019,9%</b>	<b>531.147</b>	<b>1.270.641</b>	<b>139,2%</b>