

SHIPMENT REPORT



CHILENUT

MONTHLY SHIPMENT REPORT

DEC 12, 2023

NOVEMBER SHIPMENTS
(21/MAR/2023 – 30/NOV/2023)

Inshell (Metric tons)

	November		% change	Export 21/mar to 30/nov		% change
	2022	2023	2023 vs 2022	2022	2023	2023 vs 2022
	Export	6.726	4.577	-32%	88.928	98.725

Shelled (Metric tons)

	November		% change	Export 21/mar to 30/nov		% change
	2022	2023	2023 vs 2022	2022	2023	2023 vs 2022
	Export	3.643	3.949	8%	30.586	28.226

Inshell equivalent (Metric tons)

	November		% change	Export 21/mar to 30/nov		% change
	2022	2023	2023 vs 2022	2022	2023	2023 vs 2022
	Export	14.560	13.070	-10%	154.704	159.425

Disclosure:

I/ Information source: Official records of Agriculture and Livestock Service of Chile (SAG), gathered by ASOEX (The Chilean Fruit Exporters Association).

II/ Shellout rate: The shellout rate from the previous season is still being used (46,5%).

III/ Season 2023: March 21st is considered as the first day of the 2023 season.

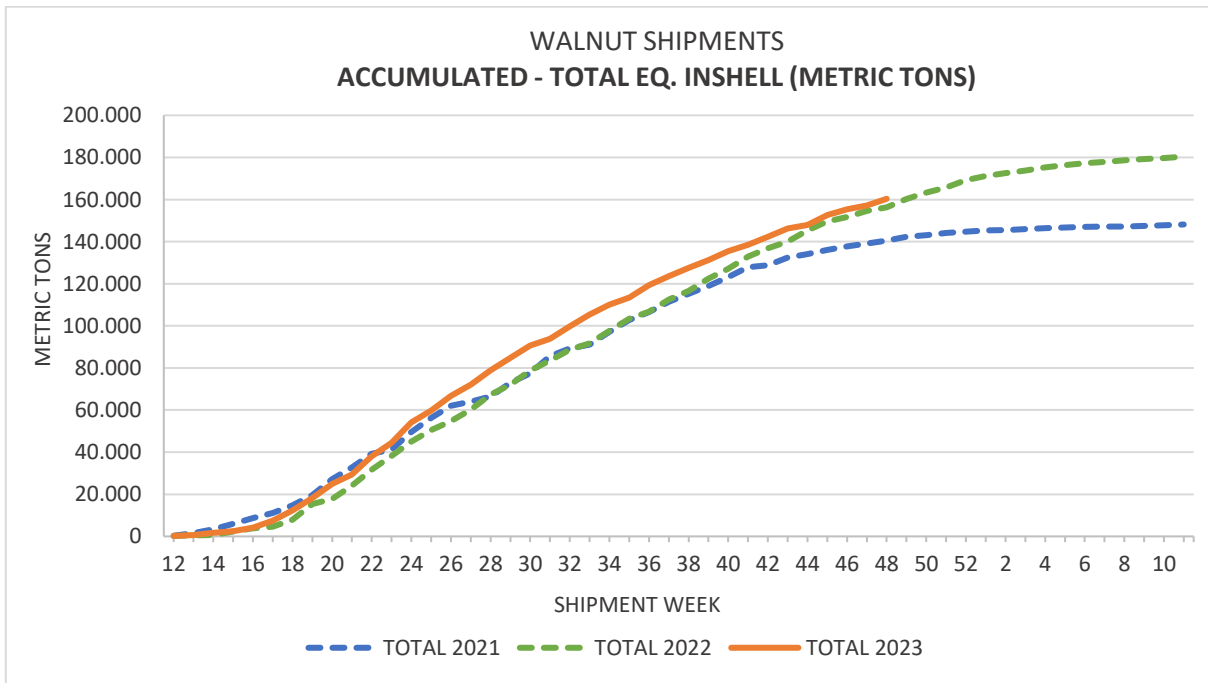
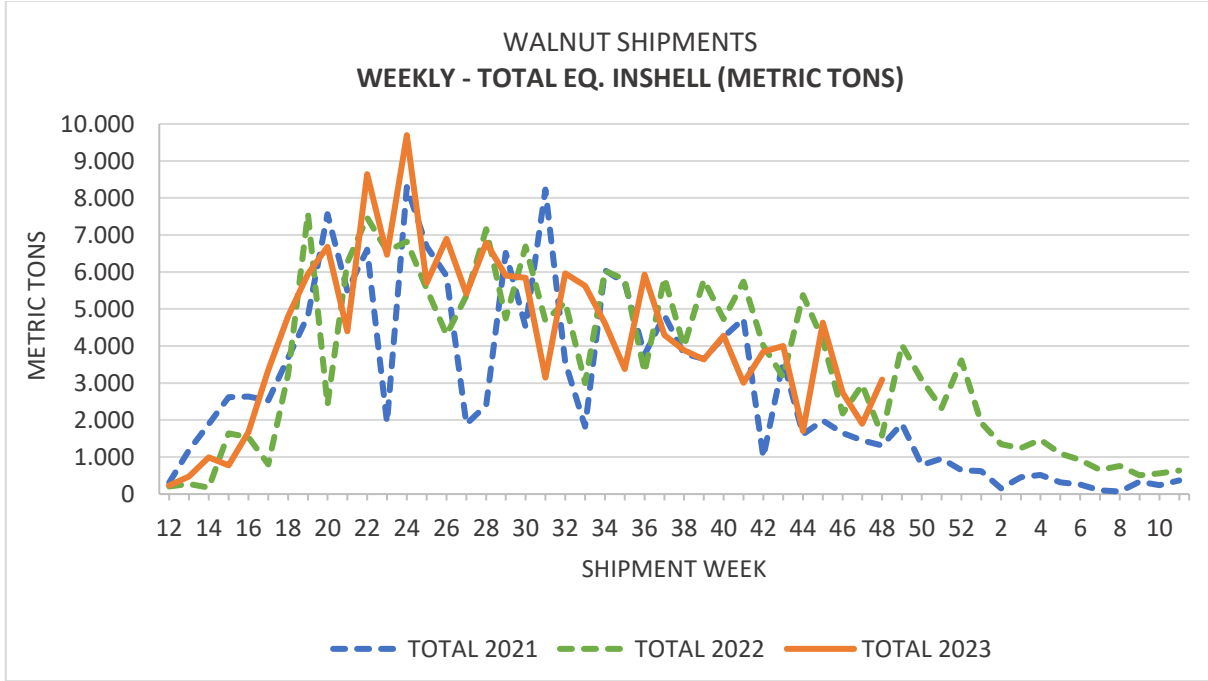


SHIPMENT REPORT

Situation of present economic developments in first semester



CHILENUT



may jun jul aug



dec nov oct sep aug

WWW.CHILENUT.CL



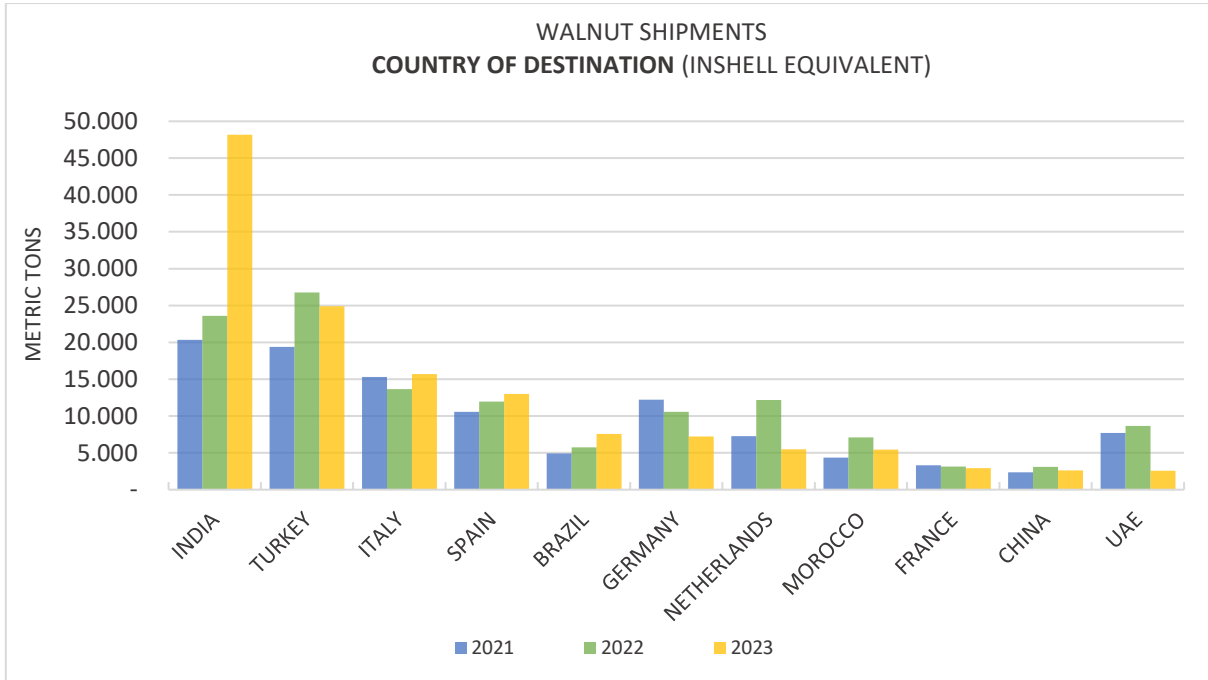
28158	661	2352
7626	313	2318
216		2125
532	328	2078

SHIPMENT REPORT

Situation of present economic developments in first semester



CHILENUT



Note: Purchase Commitments for November 2023 were 98,0%. This report is based on information submitted by [Chilenut members](#).



SHIPMENT REPORT



CHILENUT

WALNUT SHIPMENTS BY COUNTRY OF DESTINATION (KILOGRAMS) 21/Mar/2023 to 30/Nov/2023

	INSHELL			SHELLED		
	2022	2023	% VAR	2022	2023	% VAR
MIDDLE EAST/AFRICA						
Israel	0	0	0%	219.712	242.880	11%
Lebanon	559.950	590.450	5%	20.000	39.287	96%
Morocco	7.097.655	5.348.620	-25%	0	41.550	-
Turkey	25.016.635	22.637.001	-10%	804.634	1.056.937	31%
U.A.E	7.414.605	1.812.259	-76%	574.704	363.807	-37%
Other	1.530.298	1.084.770	-29%	242.780	294.330	21%
SUBTOTAL MIDDLE EAST/AFRICA	41.619.143	31.473.100	-24,4%	1.861.830	2.038.791	9,5%
EUROPE						
Austria	11	0	-100%	69.850	91.504	31%
Belgium	423.075	5.230	-99%	268.420	443.546	65%
France	19.000	25.025	32%	1.457.750	1.341.974	-8%
Germany	971.705	1.342.362	38%	4.469.310	2.737.244	-39%
Holland	1.265.996	502.125	-60%	5.076.737	2.325.026	-54%
Italy	6.746.845	7.684.874	14%	3.219.689	3.715.820	15%
Lithuania	200.000	17.110	-91%	42.520	163.516	285%
Poland	132.500	10.000	-92%	90.300	90.230	0%
Portugal	233.720	96.333	-59%	1.078.829	573.376	-47%
Romania	20.000	0	-100%	0	0	0%
Russia	511.145	324.194	-37%	166.333	181.830	9%
Spain	3.686.535	2.985.964	-19%	3.844.692	4.665.457	21%
Switzerland	0	0	0%	638.199	397.450	-38%
U.K.	158.220	138.000	-13%	549.600	710.551	29%
Other	3.371.793	2.344.825	-30%	1.962.991	1.870.348	-5%
SUBTOTAL EUROPE	17.740.545	15.476.042	-12,8%	22.935.220	19.307.872	-15,8%
AMERICA						
Brazil	507.879	919.220	81%	2.431.779	3.092.180	27%
Ecuador	64.499	75.727	17%	1.110.151	1.120.805	1%
Peru	758.375	821.875	8%	65.000	107.100	65%
Uruguay	11.500	5.500	-52%	473.515	378.821	-20%
Other	180.593	135.385	-25%	688.666	582.797	-15%
SUBTOTAL AMERICA	1.522.846	1.957.707	28,6%	4.769.111	5.281.703	10,7%
ASIA / OCEANIA						
Australia	10.000	8.440	-16%	173.942	151.968	-13%
China	3.114.259	2.611.227	-16%	0	0	0%
India	23.193.413	46.500.650	100%	194.480	770.658	296%
Japan	0	0	0%	198.482	241.756	22%
South Korea	0	0	0%	247.370	352.670	43%
Vietnam	1.472.927	522.200	-65%	0	0	0%
Other	254.850	176.021	-31%	205.526	80.084	-61%
SUBTOTAL ASIA / OCEANIA	28.045.449	49.818.538	77,6%	1.019.800	1.597.136	56,6%
TOTAL	88.927.983	98.725.387	11,0%	30.585.961	28.225.502	-7,7%



SHIPMENT REPORT



CHILENUT

WALNUT SHIPMENTS BY COUNTRY OF DESTINATION (KILOGRAMS)

Nov 2022 / Nov 2023

	INSHELL			SHELLED		
	2022	2023	% VAR	2022	2023	% VAR
MIDDLE EAST/AFRICA						
Israel	0	0	0%	89.588	20.000	-78%
Lebanon	143.575	0	-100%	0	0	0%
Morocco	100.000	40.000	-60%	0	0	0%
Turkey	3.463.750	1.062.170	-69%	281.635	227.555	-19%
U.A.E	60.000	10.250	-83%	55.080	66.676	21%
Other	24.000	41.000	71%	32.000	38.170	19%
SUBTOTAL MIDDLE EAST/AFRICA	3.791.325	1.153.420	-69,6%	458.303	352.401	-23,1%
EUROPE						
Austria	0	0	0%	0	21.504	-
Belgium	0	0	0%	53.780	95.106	77%
France	0	0	0%	357.470	399.240	12%
Germany	100.000	0	-100%	601.174	521.516	-13%
Holland	31.030	20.000	-36%	448.000	544.156	21%
Italy	375.580	327.887	-13%	239.330	439.616	84%
Lithuania	80.000	0	-100%	0	34.596	-
Portugal	0	0	0%	86.570	41.480	-52%
Russia	12.000	55.264	361%	62.540	34.230	-45%
Spain	127.450	58.900	-54%	174.750	183.260	5%
Switzerland	0	0	0%	172.409	28.780	-83%
U.K.	26.520	15.500	-42%	81.100	47.870	-41%
Other	257.380	183.200	-29%	231.195	212.300	-8%
SUBTOTAL EUROPE	1.009.960	660.751	-34,6%	2.508.318	2.603.654	3,8%
AMERICA						
Brazil	64.859	190.675	194%	293.901	641.870	118%
Ecuador	23.669	21.000	-11%	99.946	126.984	27%
Peru	0	22.000	#i DIV/0!	20.000	13.500	-33%
Uruguay	2.500	0	-100%	74.762	45.170	-40%
Other	7.000	18.720	167%	89.310	89.642	0%
SUBTOTAL AMERICA	98.028	252.395	157,5%	577.919	917.166	58,7%
ASIA / OCEANIA						
Australia	0	0	0%	2	0	-100%
China	99.275	60.000	-40%	0	0	0%
India	1.686.798	2.430.194	44%	18.000	60.500	236%
Japan	0	0	0%	46.200	0	-100%
Other	40.850	20.000	0%	33.894	15.600	-54%
SUBTOTAL ASIA / OCEANIA	1.826.923	2.510.194	37,4%	98.096	76.100	-22,4%
TOTAL	6.726.236	4.576.760	-32,0%	3.642.636	3.949.321	8,4%

