

SHIPMENT REPORT



CHILENUT

MONTHLY SHIPMENT REPORT

JAN 10, 2024

DECEMBER SHIPMENTS

(21/MAR/2023 – 31/DEC/2023)

Inshell (Metric tons)

	December		% change	Export 21/mar to 31/dec		% change
	2022	2023		2022	2023	
			2023 vs 2022			2023 vs 2022
Export	6.256	2.476	-60%	95.184	101.181	6%

Shelled (Metric tons)

	December		% change	Export 21/mar to 31/dec		% change
	2022	2023		2022	2023	
			2023 vs 2022			2023 vs 2022
Export	3.845	2.912	-24%	34.431	31.154	-10%

Inshell equivalent (Metric tons)

	December		% change	Export 21/mar to 31/dec		% change
	2022	2023		2022	2023	
			2023 vs 2022			2023 vs 2022
Export	14.524	8.738	-40%	169.228	168.180	-1%

Disclosure:

I/ Information source: Official records of Agriculture and Livestock Service of Chile (SAG), gathered by ASOEX (The Chilean Fruit Exporters Association).

II/ Shellout rate: The shellout rate from the previous season is still being used (46,5%).

III/ Season 2023: March 21st is considered as the first day of the 2023 season.

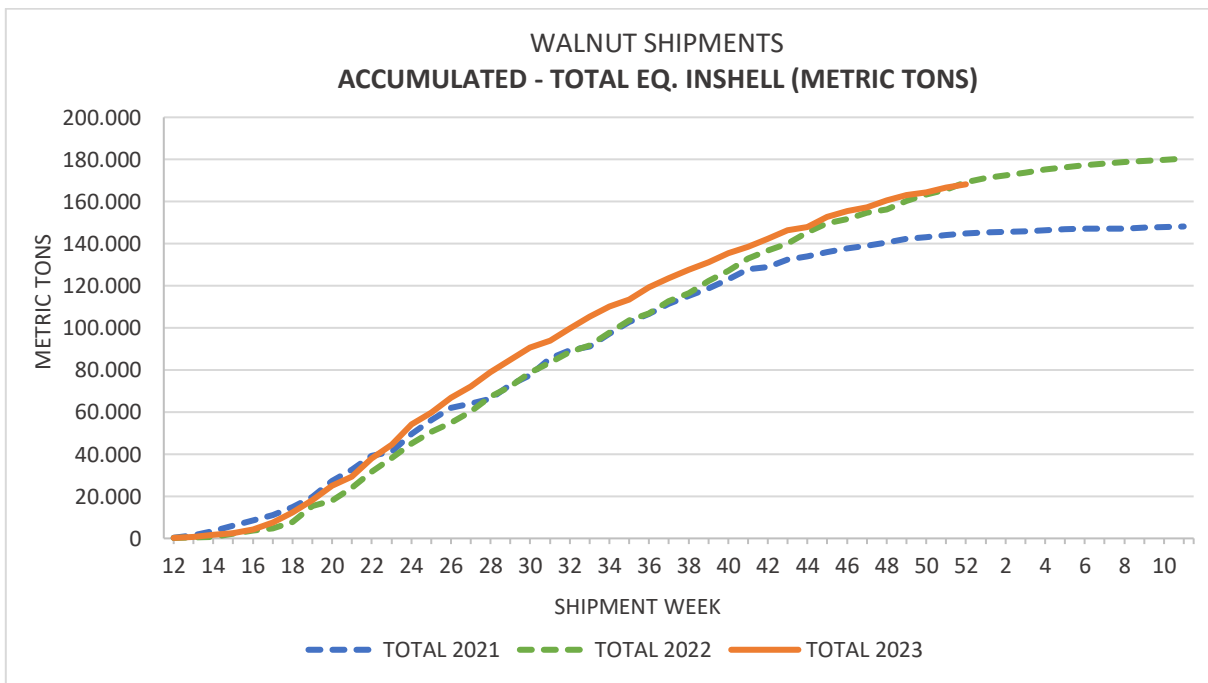
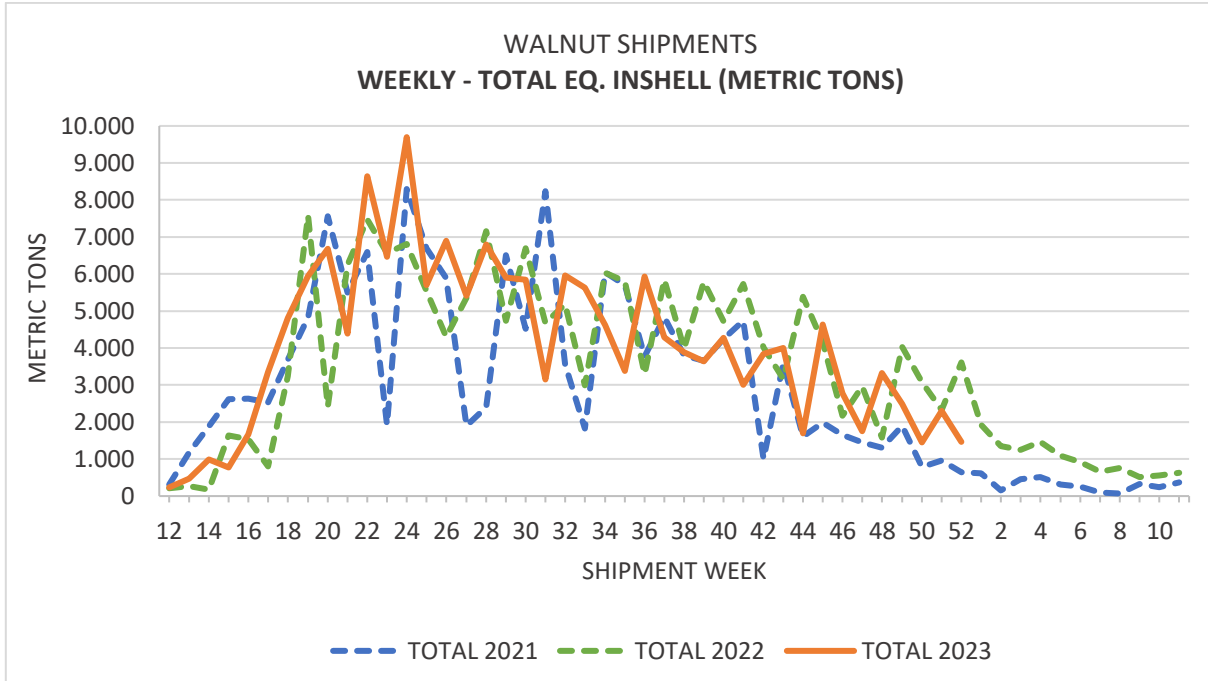


SHIPMENT REPORT

Situation of present economic developments in first semester



CHILENUT



may jun jul aug sep



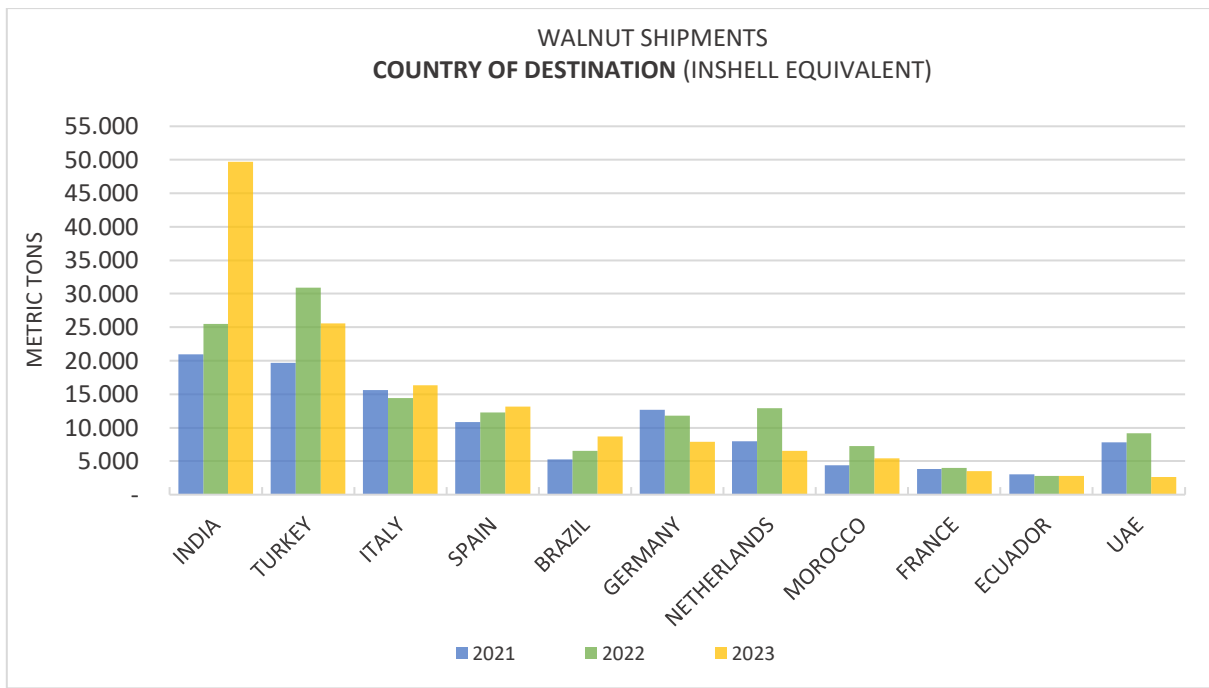
dec
nov
oct
sep
aug
jul

WWW.CHILENUT.CL



20158	661	2352
7626	313	2318
216		2125
532	328	2078

SHIPMENT REPORT



Note: Purchase Commitments for December 2023 were 99,2%. This report is based on information submitted by [Chilenut members](#).



20158	661	2352
7626	212	2318
216		2125
532	328	2078

SHIPMENT REPORT



CHILENUT

WALNUT SHIPMENTS BY COUNTRY OF DESTINATION (KILOGRAMS)

21/Mar/2023 to 31/Dec/2023

	INSHELL			SHELLED		
	2022	2023	% VAR	2022	2023	% VAR
MIDDLE EAST/AFRICA						
Israel	0	0	0%	306.192	277.400	-9%
Lebanon	608.950	590.450	-3%	20.000	60.287	201%
Morocco	7.229.010	5.353.520	-26%	0	41.550	-
Turkey	28.529.695	22.905.001	-20%	1.117.034	1.248.228	12%
U.A.E	7.635.105	1.812.259	-76%	726.304	373.037	-49%
Other	1.557.598	1.225.770	-21%	403.460	294.330	-27%
SUBTOTAL MIDDLE EAST/AFRICA	45.560.358	31.887.000	-30,0%	2.572.990	2.294.832	-10,8%
EUROPE						
Austria	11	0	-100%	69.850	70.000	0%
Belgium	423.075	5.230	-99%	321.490	498.578	55%
France	19.000	25.025	32%	1.831.737	1.623.287	-11%
Germany	1.034.665	1.358.222	31%	5.007.610	3.035.938	-39%
Holland	1.265.996	527.125	-58%	5.421.855	2.794.624	-48%
Italy	6.863.025	7.720.874	12%	3.530.519	4.004.263	13%
Lithuania	240.000	17.110	-93%	52.520	163.516	211%
Poland	132.500	10.000	-92%	100.100	110.234	10%
Portugal	233.720	96.333	-59%	1.208.389	619.576	-49%
Romania	20.000	0	-100%	0	0	0%
Russia	551.145	481.114	-13%	272.533	198.830	-27%
Spain	3.748.535	2.993.414	-20%	3.959.442	4.738.833	20%
Switzerland	0	0	0%	684.199	449.450	-34%
U.K.	158.220	198.383	25%	640.804	753.651	18%
Other	3.564.443	2.492.825	-30%	2.194.243	1.946.656	-11%
SUBTOTAL EUROPE	18.254.335	15.925.655	-12,8%	25.295.291	21.007.436	-17,0%
AMERICA						
Brazil	524.379	943.220	80%	2.799.552	3.595.764	28%
Ecuador	79.018	75.727	-4%	1.262.827	1.261.012	0%
Peru	758.375	821.875	8%	65.000	107.100	65%
Uruguay	11.500	7.350	-36%	498.532	466.585	-6%
Other	181.593	136.785	-25%	782.764	759.334	-3%
SUBTOTAL AMERICA	1.554.865	1.984.957	27,7%	5.408.675	6.189.795	14,4%
ASIA / OCEANIA						
Australia	10.000	8.440	-16%	173.942	151.968	-13%
China	3.114.259	2.611.227	-16%	0	0	0%
India	24.962.402	48.045.816	92%	248.480	770.658	210%
Japan	0	0	0%	244.682	275.482	13%
South Korea	0	0	0%	258.866	377.578	46%
Vietnam	1.472.927	522.200	-65%	0	0	0%
Other	254.850	196.021	-23%	227.666	86.584	-62%
SUBTOTAL ASIA / OCEANIA	29.814.438	51.383.704	72,3%	1.153.636	1.662.270	44,1%
TOTAL	95.183.996	101.181.316	6,3%	34.430.592	31.154.333	-9,5%



SHIPMENT REPORT



CHILENUT

WALNUT SHIPMENTS BY COUNTRY OF DESTINATION (KILOGRAMS)

Dec 2022 / Dec 2023

	INSHELL			SHELLED		
	2022	2023	% VAR	2022	2023	% VAR
MIDDLE EAST/AFRICA						
Israel	0	0	0%	86.480	34.520	-60%
Lebanon	49.000	0	-100%	0	21.000	-
Morocco	131.355	4.900	-96%	0	0	0%
Turkey	3.513.060	288.000	-92%	312.400	191.291	-39%
U.A.E	220.500	0	-100%	151.600	9.230	-94%
Other	27.300	121.000	343%	160.680	0	-100%
SUBTOTAL MIDDLE EAST/AFRICA	3.941.215	413.900	-89,5%	711.160	256.041	-64,0%
EUROPE						
Belgium	0	0	0%	53.070	55.032	4%
France	0	0	0%	373.987	304.413	-19%
Germany	62.960	15.860	-75%	538.300	277.190	-49%
Holland	0	25.000	-	345.118	469.598	36%
Italy	116.180	36.000	-69%	310.830	288.443	-7%
Lithuania	40.000	0	-100%	10.000	0	-100%
Poland	0	0	0%	9.800	20.004	104%
Portugal	0	0	0%	129.560	46.200	-64%
Russia	40.000	156.920	292%	106.200	15.000	-86%
Spain	62.000	7.450	-88%	114.750	73.376	-36%
Switzerland	0	0	0%	46.000	52.000	13%
U.K.	0	60.383	-	91.204	43.100	-53%
Other	192.650	168.000	-13%	231.252	53.208	-77%
SUBTOTAL EUROPE	513.790	469.613	-8,6%	2.360.071	1.697.564	-28,1%
AMERICA						
Brazil	16.500	24.000	45%	367.773	503.584	37%
Ecuador	14.519	0	-100%	152.676	125.207	-18%
Uruguay	0	1.850	-	25.017	87.764	251%
Other	1.000	1.400	40%	94.098	176.537	88%
SUBTOTAL AMERICA	32.019	27.250	-14,9%	639.564	893.092	39,6%
ASIA / OCEANIA						
India	1.768.989	1.545.166	-13%	54.000	0	-100%
Japan	0	0	0%	46.200	33.726	-27%
Korea	0	0	0%	11.496	24.908	117%
Other	0	20.000	-	22.140	6.500	-71%
SUBTOTAL ASIA / OCEANIA	1.768.989	1.565.166	-11,5%	133.836	65.134	-51,3%
TOTAL	6.256.013	2.475.929	-60,4%	3.844.631	2.911.831	-24,3%

