

SHIPMENT REPORT



CHILENUT

MONTHLY SHIPMENT REPORT

FEB 19, 2024

JANUARY SHIPMENTS

(21/MAR/2023 – 31/JAN/2024)

Inshell (Metric tons)

	January		% change	Export 21/mar to 31/jan		% change
	2023	2024	2024 vs 2023	2022	2023	2023 vs 2022
	Export	1.876	1.358	-28%	97.060	102.557

Shelled (Metric tons)

	January		% change	Export 21/mar to 31/jan		% change
	2023	2024	2024 vs 2023	2022	2023	2023 vs 2022
	Export	1.957	1.829	-7%	36.388	33.073

Inshell equivalent (Metric tons)

	January		% change	Export 21/mar to 31/jan		% change
	2023	2024	2024 vs 2023	2022	2023	2023 vs 2022
	Export	6.085	5.290	-13%	175.313	173.683

Disclosure:

I/ Information source: Official records of Agriculture and Livestock Service of Chile (SAG), gathered by ASOEX (The Chilean Fruit Exporters Association).

II/ Shellout rate: The shellout rate from the previous season is still being used (46,5%).

III/ Season 2023: March 21st is considered as the first day of the 2023 season.

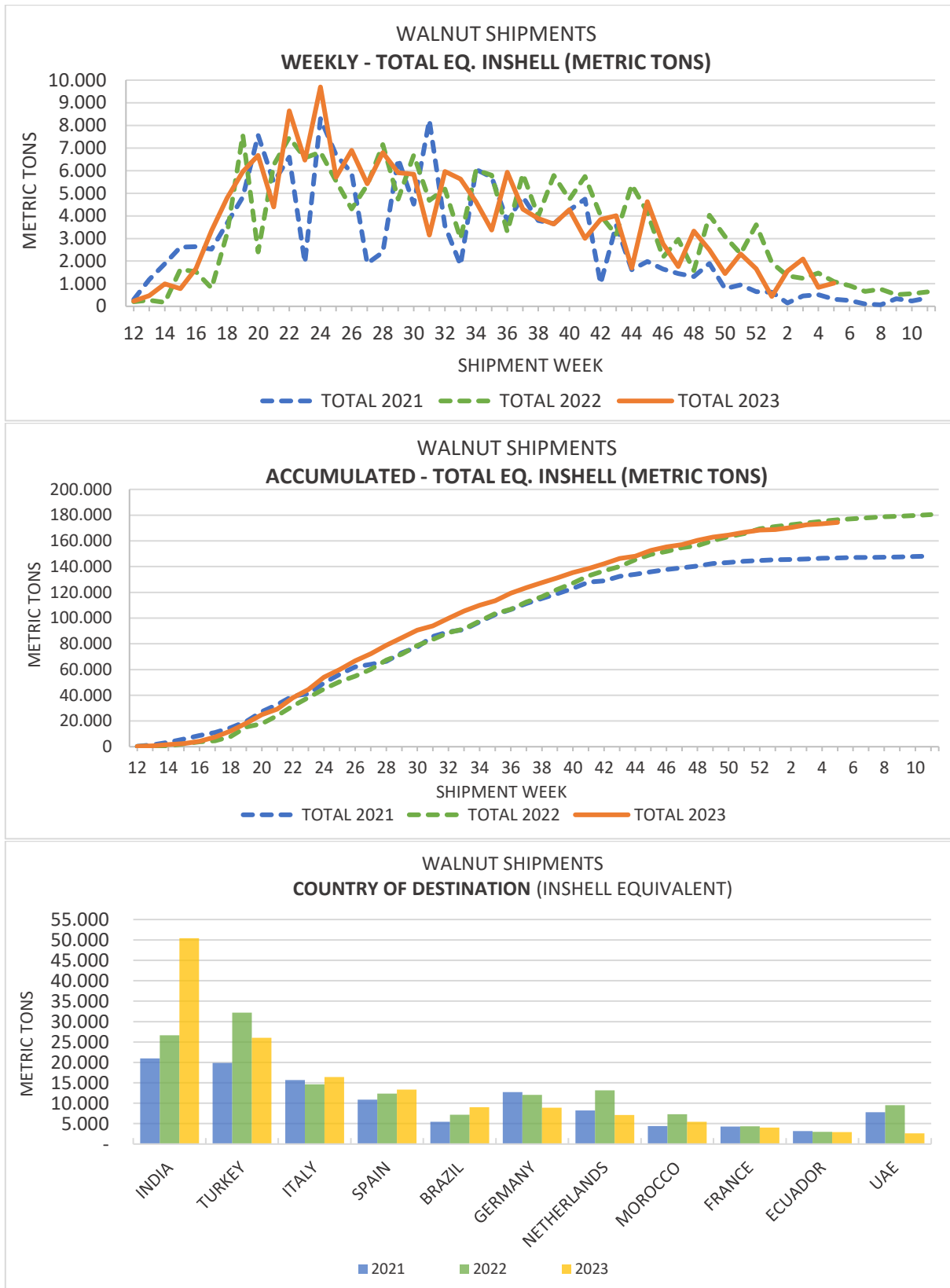


SHIPMENT REPORT



CHILENUT

Situation of present economic developments in first semester



SHIPMENT REPORT



CHILENUT

WALNUT SHIPMENTS BY COUNTRY OF DESTINATION (KILOGRAMS) 21/Mar/2023 to 31/Jan/2024

	INSHELL			SHELLED		
	2023	2024	% VAR	2023	2024	% VAR
MIDDLE EAST/AFRICA						
Israel	0	0	0%	306.192	323.500	6%
Lebanon	608.950	590.450	-3%	20.000	81.287	306%
Morocco	7.293.110	5.353.520	-27%	0	41.550	-
Turkey	29.111.345	23.187.955	-20%	1.442.407	1.330.202	-8%
U.A.E	7.655.580	1.812.259	-76%	879.634	373.037	-58%
Other	1.577.598	1.225.900	-22%	551.160	281.140	-49%
SUBTOTAL MIDDLE EAST/AFRICA	46.246.583	32.170.084	-30,4%	3.199.393	2.430.716	-24,0%
EUROPE						
Austria	11	0	-100%	69.850	70.000	0%
Belgium	423.075	5.230	-99%	363.290	526.530	45%
France	19.000	25.025	32%	2.009.733	1.859.307	-7%
Germany	1.076.665	1.358.222	26%	5.114.710	3.512.176	-31%
Holland	1.265.996	552.675	-56%	5.530.645	3.065.296	-45%
Italy	6.863.025	7.720.874	12%	3.627.319	4.055.575	12%
Lithuania	240.000	17.110	-93%	52.520	163.516	211%
Poland	132.500	10.000	-92%	120.100	110.234	-8%
Portugal	233.720	96.333	-59%	1.208.389	686.720	-43%
Romania	20.000	0	-100%	0	0	0%
Russia	571.145	657.594	15%	333.533	217.800	-35%
Spain	3.748.535	2.993.414	-20%	4.009.472	4.821.373	20%
Switzerland	0	0	0%	706.199	471.402	-33%
U.K.	158.220	198.383	25%	668.164	773.651	16%
Other	3.686.333	2.681.245	-27%	2.266.987	2.072.666	-9%
SUBTOTAL EUROPE	18.438.225	16.316.105	-11,5%	26.080.911	22.406.246	-14,1%
AMERICA						
Brazil	524.379	944.220	80%	3.091.452	3.759.177	22%
Ecuador	81.018	75.727	-7%	1.354.626	1.317.192	-3%
Peru	758.375	821.875	8%	65.000	107.100	65%
Uruguay	13.500	7.350	-46%	522.025	527.951	1%
Other	181.593	136.785	-25%	820.864	831.134	1%
SUBTOTAL AMERICA	1.558.865	1.985.957	27,4%	5.853.967	6.542.554	11,8%
ASIA / OCEANIA						
Australia	10.000	8.440	-16%	173.942	151.968	-13%
China	3.114.259	2.611.227	-16%	0	0	0%
India	25.954.910	48.747.335	88%	328.280	787.683	140%
Japan	0	0	0%	244.682	288.894	18%
South Korea	0	0	0%	258.866	377.578	46%
Vietnam	1.482.302	522.200	-65%	0	0	0%
Other	254.850	196.021	-23%	247.666	87.684	-65%
SUBTOTAL ASIA / OCEANIA	30.816.321	52.085.223	69,0%	1.253.436	1.693.807	35,1%
TOTAL	97.059.994	102.557.369	5,7%	36.387.707	33.073.323	-9,1%



SHIPMENT REPORT



CHILENUT

WALNUT SHIPMENTS BY COUNTRY OF DESTINATION (KILOGRAMS)

Jan 2023 / Jan 2024

	INSHELL			SHELLED		
	2023	2024	% VAR	2023	2024	% VAR
MIDDLE EAST/AFRICA						
Israel	0	0	0%	0	46.100	-
Lebanon	0	0	0%	0	21.000	-
Morocco	64.100	0	-100%	0	0	0%
Turkey	581.650	282.954	-51%	325.373	81.974	-75%
U.A.E	20.475	0	-100%	153.330	0	-100%
Other	20.000	40.130	101%	147.700	3.000	-98%
SUBTOTAL MIDDLE EAST/AFRICA	686.225	323.084	-52,9%	626.403	152.074	-75,7%
EUROPE						
Belgium	0	0	0%	41.800	27.952	-33%
France	0	0	0%	177.996	212.920	20%
Germany	42.000	0	-100%	107.100	476.238	345%
Holland	0	25.550	-	108.790	270.672	149%
Italy	0	0	0%	96.800	51.312	-47%
Poland	0	0	0%	20.000	0	-100%
Russia	20.000	221.000	1005%	61.000	18.970	-69%
Spain	0	0	0%	50.030	82.540	65%
Switzerland	0	0	0%	22.000	21.952	0%
U.K.	0	0	0%	27.360	20.000	-27%
Other	121.890	85.420	-30%	72.744	109.820	51%
SUBTOTAL EUROPE	183.890	331.970	80,5%	785.620	1.292.376	64,5%
AMERICA						
Brazil	0	1.000	-	291.900	163.413	-44%
Ecuador	2.000	0	-100%	91.799	56.180	-39%
Uruguay	2.000	0	-100%	23.493	61.366	161%
Other	0	0	0%	38.100	71.800	88%
SUBTOTAL AMERICA	4.000	1.000	-75,0%	445.292	352.759	-20,8%
ASIA / OCEANIA						
India	992.508	701.519	-29%	79.800	17.025	-79%
Japan	0	0	0%	0	13.412	-
Vietnam	9.375	0	-100%	0	0	0%
Other	0	0	0%	20.000	1.100	-95%
SUBTOTAL ASIA / OCEANIA	1.001.883	701.519	-30,0%	99.800	31.537	-68,4%
TOTAL	1.875.998	1.357.573	-27,6%	1.957.115	1.828.746	-6,6%

